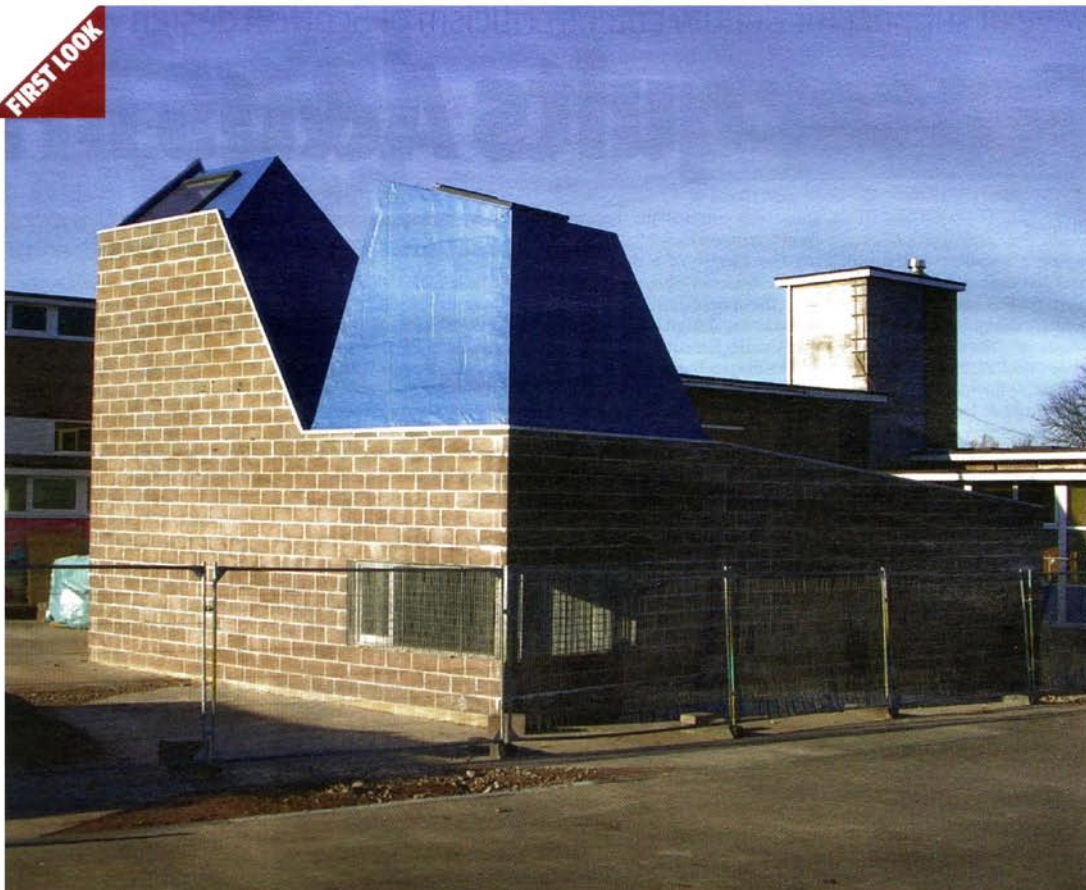


FIRST LOOK



Room 13 for Bath's budding artists

Bath practice Mitchell Taylor Workshop has designed a new kind of arts building which will help promote interaction between artists and children.

The 100sq m structure, which consists of two studios illuminated by naturally-lit "lanterns" above, is nearing completion at Hareclive primary school in Bristol's deprived Hartcliffe area.

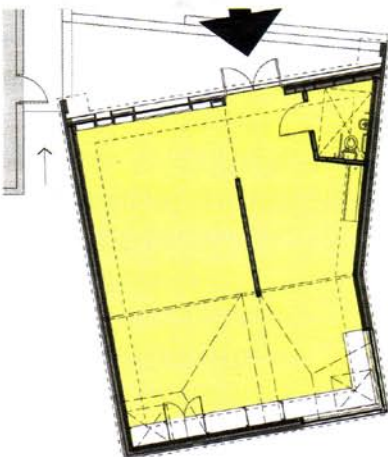
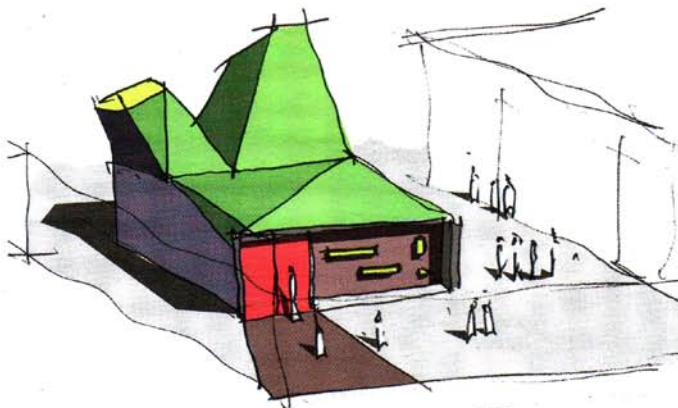
It is the first purpose-built "Room 13" in the country – a programme that encourages interaction between pupils and resident artists.

Project director Piers Taylor said: "It's a really interesting project, rather like the [cancer care] Maggie's Centres around the country. Hopefully there will now be a series of Room 13s built by different architects."

Taylor pointed to the "raw look" of the £140,000 timber-frame Bristol building, achieved through using materials such as fair-faced concrete and fibreboard to encourage users to treat it like an artist's easel or palette.

"The finish will be the paint splattered around inside," he said. "We are using all these dirt-cheap materials and putting them on display. It reflects the gritty context and the fact that the life of the building comes from the people who use it."

The two studios, which can operate as a single space if needed, are topped with a blockwork lantern and a blue polymeric membrane lantern which is flexible enough to form a highly complex shape.



Top: On top of the structure are two lanterns, one of blockwork and one of blue polymeric membrane.
Middle: Sketch of Mitchell Taylor Workshop's proposal.
Bottom, near right: The internal space contains two studios which can be joined to make one large space.
Bottom, far right: Looking up inside a "lantern" which lights the building naturally.